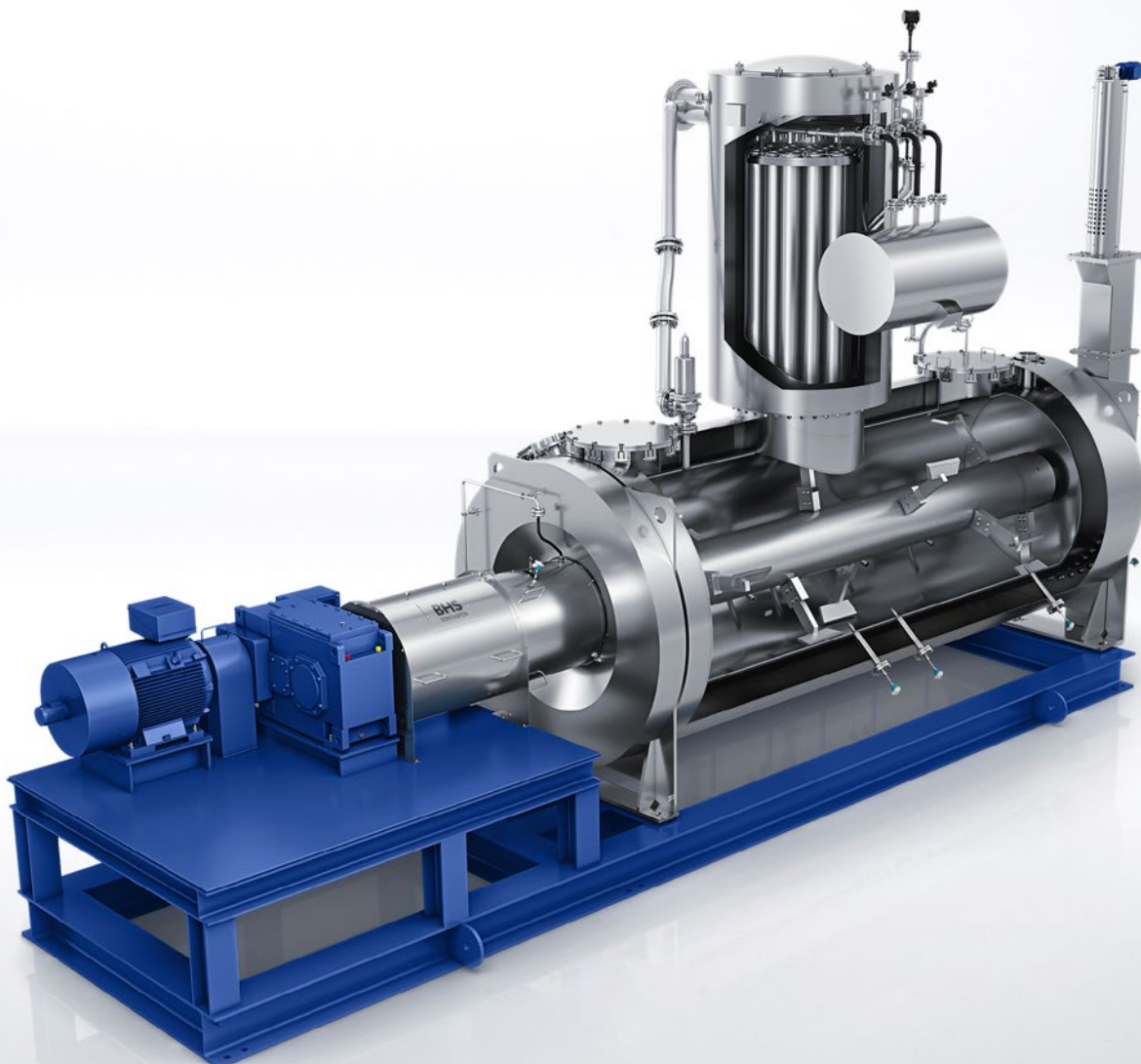


HORIZONTAL DRYER (HTC-T/HTK-T)

Efficient drying with high energy input

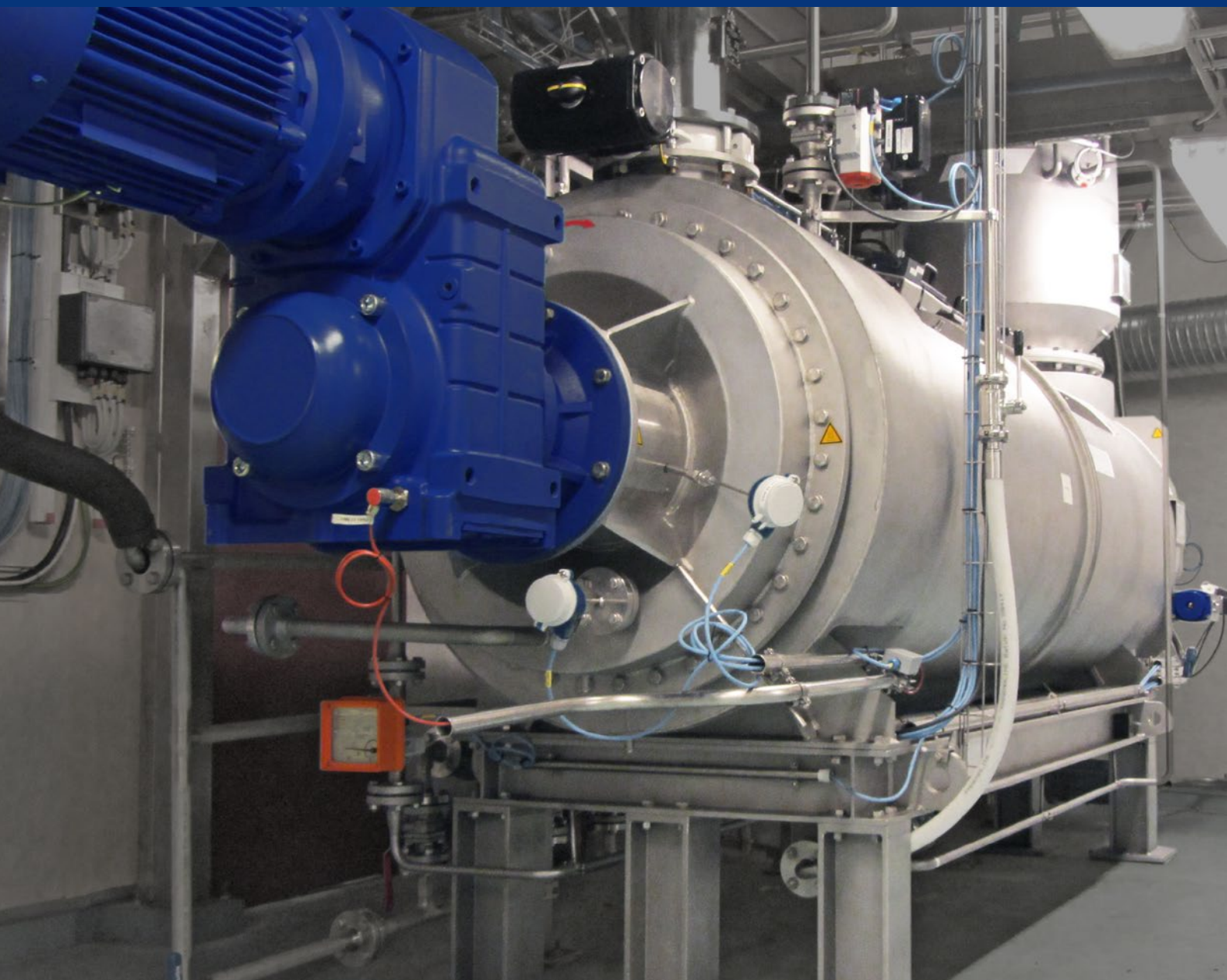
TRANSFORMING
MATERIALS INTO VALUE



VERSATILE PROCESS OPTIONS

Achieving low residual moisture levels.

- ✔ **Flexible process control**
Drying in batch or continuous operation.
- ✔ **Controlled Reaction**
Converting chemical substances under specified conditions.
- ✔ **Application-specific heating media**
Heating with saturated steam, thermal oil, hot water or electricity.
- ✔ **Different heating zones**
Controlling continuous drying processes precisely.
- ✔ **Vacuum and pressurized operation**
Processing products under various pressure levels.
- ✔ **Multiple process steps**
Combining different processes in a single machine.



POWERFUL DRYING

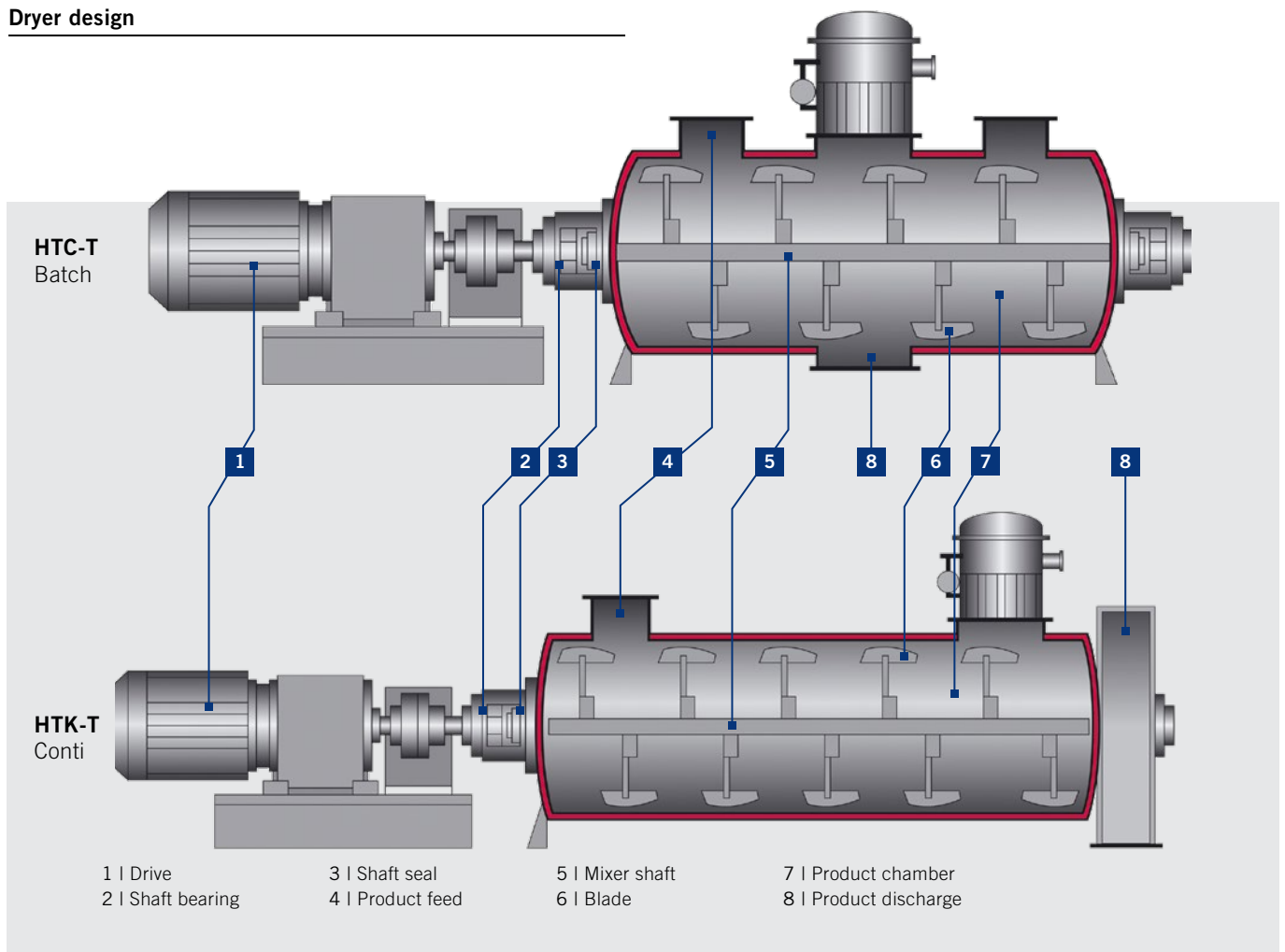
Batch or continuously operated contact dryer.

The BHS **horizontal dryers** are batch or continuously operated dryers. They operate based on the principle of contact drying with a high proportion of heat transfer surfaces. The constant circulation of the product along these heated surfaces results in the uniform expulsion of moisture and creates a uniform temperature and product moisture distribution in the product chamber. Any occurring vapors are removed via specially designed vapor filter systems. The result is low residual moisture in a short process time.

Advantages

- ✓ Short drying times
- ✓ High energy input
- ✓ Precise control of residual moisture
- ✓ Efficient drying of highly viscous products
- ✓ Heavy-duty designs meet demanding requirements

Dryer design



TOP PERFORMANCE IN EVERY DETAIL

Benefit from superior technology.

EFFICIENT DRYING 1

- Dynamic contact drying
- BHS paddle mixing unit, also available with heated shaft
- High utilization of heat transfer surfaces

HIGH PLANT SAFETY 2

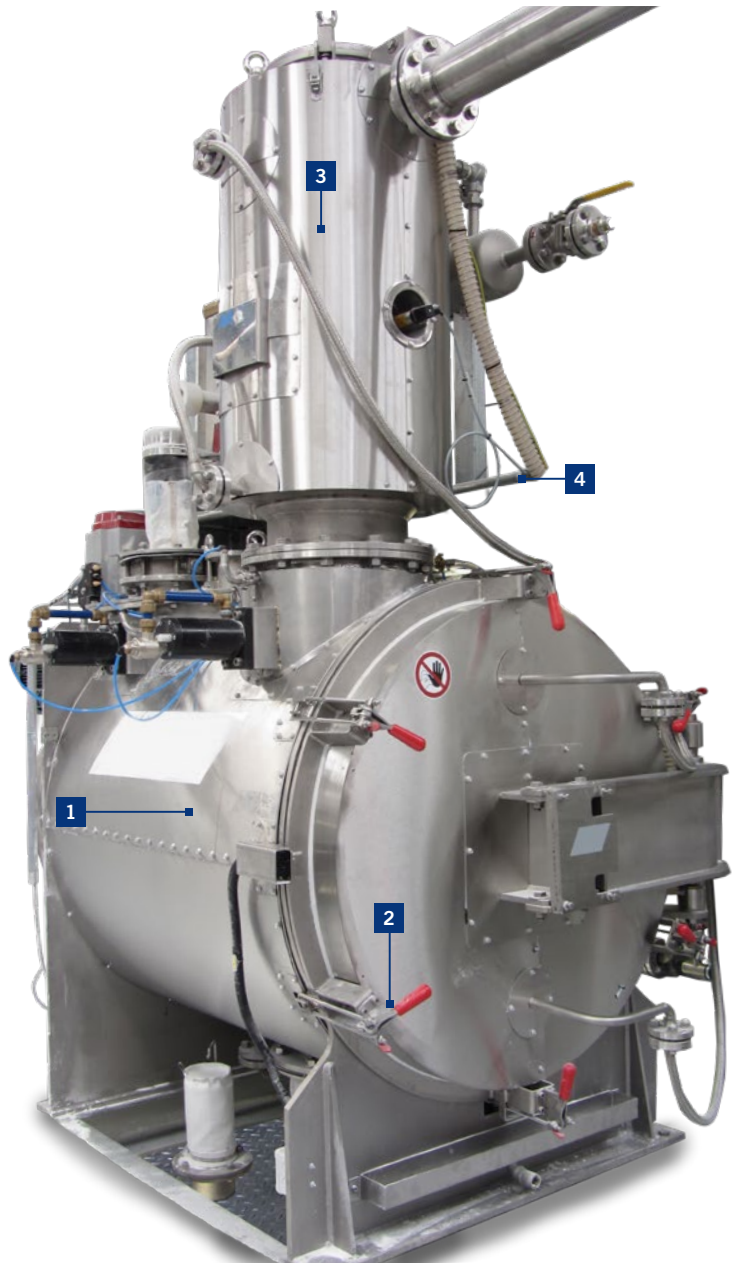
- Robust design
- Highly temperature resistant sealing materials
- Instrument-based process monitoring
- Risk analysis and ATEX design

LOW OPERATING COSTS 3

- Vacuum operation for low drying temperatures
- Continuous drying in atmospheric operation possible
- Low emissions system

CUSTOMIZED DRYING SYSTEM 4

- Package unit consisting of dryer, heating and vacuum/condensation unit
- Fully automatic control
- Extendable with peripheral systems (feeding, dosing, transporting, packing)



 More information

 www.bhs-sonthofen.com/htc-t

BHS-Sonthofen GmbH Process Technology · An der Eisenschmelze 47 · 87527 Sonthofen · Germany

 www.bhs-sonthofen.com  +49 8321 60 99-530  process-technology@bhs-sonthofen.com